

LIMESTONE

by *Medeiros*



22' Runabout

The smart appearance of the 22' combined with beautifully executed construction¹ make her a timeless classic. The 22' shares the welded stainless steel deck hardware, fasteners and back plated construction of all motor boats carrying the *Limestone by Medeiros* moniker.

The 22's practical deck and very spacious interior² make her versatile and a pleasure to use. Boasting a smooth ride thanks to her deep Vee design³, the 22' is the choice of experienced boaters. Years of owner pride and pleasure await the discriminating purchaser of a *Limestone 22'*.

"Since 1958 I've owned many different boats, including Limestones. It's not often that I stay with one boat builder, but I'd buy another Limestone because each one I buy is better than the last! In fact, two friends recently bought Limestones based on what they experienced with my 22'."

Larry Cross, Partner, Long Manufacturing



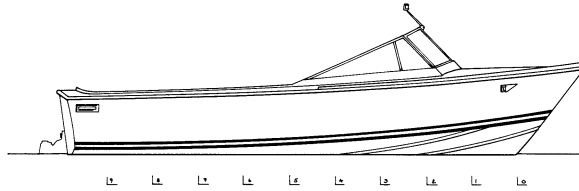
LIMESTONE 22

STANDARD SPECIFICATIONS - RUNABOUT

Standard specifications
may change at any time
without prior notice.

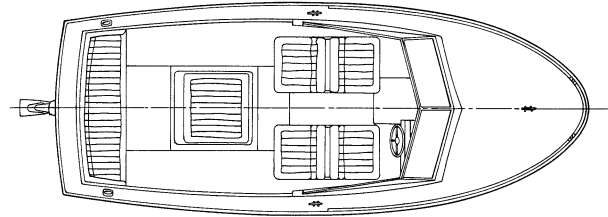
Principal Dimensions

LOA 22'1" (6.73 m)
Maximum Beam 8'7" (2.62 m)
Draft 1'4" (0.41 m)
Displacement 3,900 lbs. (1.8 t)



Hull Construction

- Single piece, balsa cored, hand lay up fiberglass construction
- Smoke white hull
- Molded in dark blue chine stripes
- Heavy duty vinyl rub rail with rope inlay at hull-deck joint
- Anodized aluminum corner castings
- Bow and stern towing eyes
- Full length stringers and structural frames overlaid to hull



Deck and Interior

- Diamond non-skid pattern on all flat surfaces
- Access hatches to fuel tank and stowage lockers
- Stainless steel bow mooring cleat
- Two S.S. bow mooring chocks
- S.S. midship mooring cleats
- Recessed stern mooring cleats
- All cleats through bolted with backup plates
- Recessed S.S. flag pole socket
- Aluminum framed windshield with tempered glass and two opening vents on side panels
- S.S. steering wheel
- Removable upholstered motor box cushion and jump seats
- Upholstered seats with stowage underneath
- Open side storage bins with shelves

- Driver and passenger mounted storage bins
- Guttered cockpit sole and transom drain plugs with flapper valves to permit self-draining
- Lockable access door to forward storage compartment

Electrical

- Automatic electric bilge pump
- Breaker panel
- Horn
- Interior dome lights
- 12 volt battery
- Battery switch
- Main breaker
- Ventilation blower
- Recessed navigation lights
- Starboard windshield wiper

Engine

- Aft (or optional mid) mounted Mercruiser stern drive
- 75 U.S. gallon (280 L) aluminum fuel tank
- Ventilation to Coast Guard specifications
- Insulated engine box
- Removable stern drive cover panel
- Instrument panel with hourmeter, tachometer, speedometer, voltmeter, temperature, fuel, oil pressure and trim indicator
- Panel light with dimmer switch
- Single lever control with stern drive trim switch

Designer: Mark Ellis Design Limited

MEDEIROS BOAT WORKS LIMITED

210 Burnhamthorpe Road East, Oakville, Ontario, Canada L6J 4Z2
Tel: (905) 257-0151 • Fax: (905) 257-0252
E-mail: limeston@interlog.com • Website: www.medeiros-boatworks.com

LIMESTONE[®]
by
Medeiros