

# LIMESTONE

by *Medeiros*



Photos may show available options

## 20' *Runabout*

The 20' *Runabout's* classic design and amenities make her a popular choice for many boaters. Her generous forward flair lifts the boat onto plane quickly and dumps spray back into the lake, keeping deck and passengers dry. Her generous proportions mean there's plenty of room for that extra passenger and the spacious storage areas keep things organized. The engine can be configured as either a mid-engine or conventional stern drive.

The versatile 20' *Runabout* reflects the Medeiros tradition for fine nautical craftsmanship and lifetime durability.



**"Rough water offered no threat to the Medeiros – the Limestone 20s ran straight into three-foot seas comfortably."**

*Doug Dawson. Power Boating Canada, In-Water Preview, October 1989*

# LIMESTONE 20

## STANDARD SPECIFICATIONS - RUNABOUT

Standard specifications  
may change at any time  
without prior notice.

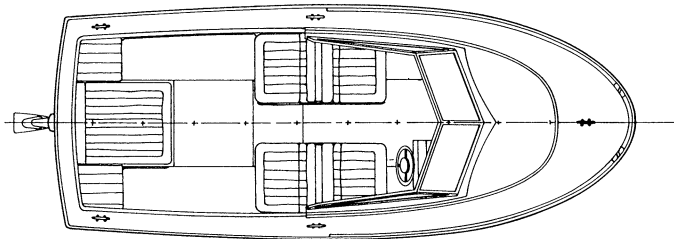
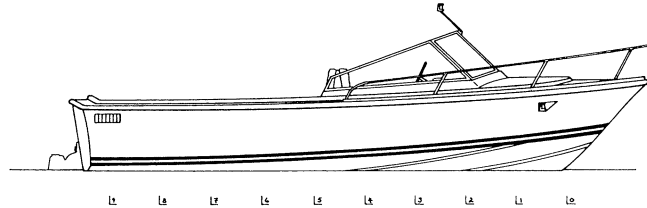
### Principal Dimensions

LOA 20'0" (6.10 m)

Maximum Beam 8'0" (2.44 m)

Draft 1'2" (0.36 m)

Displacement 3,100 lbs. (1.4 t)



### Hull Construction

- Single piece, balsa cored, hand lay up fiberglass construction
- Smoke white hull
- Molded in dark blue chine stripes
- Heavy duty vinyl rub rail with rope inlay at hull-deck joint
- Anodized aluminum corner castings
- Bow and stern towing eyes
- Structural fiberglass grid bonded to hull

Designer: Mark Ellis Design Limited

### Deck and Interior

- Diamond non-skid pattern on all flat surfaces
- Access hatches to fuel tank and stowage lockers
- Stainless steel bow mooring cleat
- Two stainless steel bow mooring chocks
- Stainless steel midship mooring cleats
- All cleats through bolted with backup plates
- Recessed stainless steel flag pole socket
- Aluminum framed tempered glass windshield with two opening vents on side panels
- Stainless steel steering wheel
- Removable upholstered motor box cushion and jump seats

- Upholstered seats with stowage underneath
- Open side storage bins with shelves
- Guttered cockpit sole and transom drain plugs with flapper valves to permit self-draining
- Lockable access door to forward storage compartment

### Electrical

- Automatic electric bilge pump
- Breaker panel
- Horn
- 12 volt battery
- Ventilation blower
- Recessed navigation lights
- Starboard windshield wiper

### Engine

- Aft (or optional mid) mounted Mercruiser stern drive
- 75 U.S. gallon (280 L) aluminum fuel tank
- Ventilation to Coast Guard specifications
- Insulated engine box
- Removable stern drive cover panel
- Instrument panel with hourmeter, tachometer, speedometer, voltmeter, temperature, fuel, oil pressure and trim indicator
- Panel light with dimmer switch
- Single lever control with stern drive trim switch

### MEDEIROS BOAT WORKS LIMITED

210 Burnhamthorpe Road East, Oakville, Ontario, Canada L6J 4Z2

Tel: (905) 257-0151 • Fax: (905) 257-0252

E-mail: [limeston@interlog.com](mailto:limeston@interlog.com) • Website: [www.medeiros-boatworks.com](http://www.medeiros-boatworks.com)

**LIMESTONE**<sup>®</sup>  
by  
*Medeiros*