

LIMESTONE

by *Medeiros*



Photos may show available options

20' Cuddy Cabin

In the current powerboat market, too often the emphasis of design has been on styling with the important qualities of sea worthiness, fuel efficiency and ride too often ignored. The *Limestone 20'* challenges this trend by placing a premium on construction. Her strategically designed and placed lift strips allow her to rise quickly and level to plane even at low speed. Throughout, deliberately absent are any superfluous add-ons, whether at the helm station¹, or in the interior or cabin².

Like all *Limestones*, the 20' benefits from a pragmatic approach to boating that ensures she'll maintain her beauty and strength after years of enthusiastic use.



"Two seasons ago three of us were caught in a wild fall storm with seven to eight foot waves. But my 20' just rode it out beautifully, no waves even came over the bow. When we got to shore, the first thing my friends did was to shake my hand. What a great rough water boat."

John McCrodan

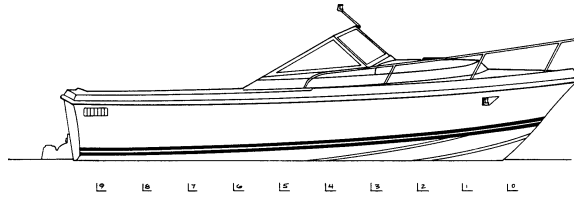
LIMESTONE 20

STANDARD SPECIFICATIONS - CUDDY CABIN

Standard specifications
may change at any time
without prior notice.

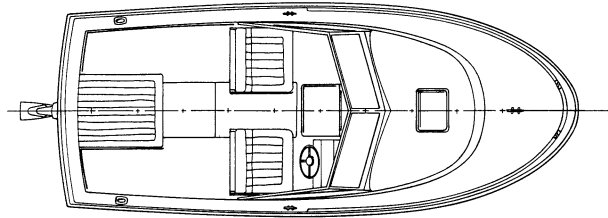
Principal Dimensions

- LOA 20'0" (6.10 m)
- Maximum Beam 8'0" (2.44 m)
- Draft 1'2" (0.36 m)
- Displacement 3,200 lbs. (1.5 t)



Hull Construction

- Single piece, balsa cored, hand lay up fiberglass construction
- Smoke white hull
- Molded in dark blue chine stripes
- Heavy duty vinyl rub rail with rope inlay at hull-deck joint
- Anodized aluminum corner castings
- Bow and stern towing eyes
- Full length stringers and structural frames overlaid to hull



Deck and Interior

- Diamond non-skid pattern on all flat surfaces
- Access hatches to fuel tank and stowage lockers
- Stainless steel bow mooring cleat
- Two S.S. bow mooring chocks
- S.S. midship mooring cleats
- Recessed stern mooring cleats
- All cleats through bolted with backup plates
- Recessed S.S. flag pole socket
- Aluminum framed tempered glass windshield
- S.S. steering wheel
- Removable upholstered motor box cushion and jump seats
- Upholstered seats with stowage underneath
- 6'4" (1.93 m) vee berth with 4" (10 cm) foam cushions

- Open side storage bins with shelves
- Driver and passenger mounted storage bins
- Guttered cockpit sole and transom drain plugs with flapper valves to permit self-draining
- Lockable access door to cuddy cabin

Electrical

- Automatic electric bilge pump
- Breaker panel
- Interior dome lights
- Horn
- 12 volt battery
- Ventilation blower
- Recessed navigation lights
- Starboard windshield wiper

Engine

- Aft mounted Mercruiser stern drive
- 60 U.S. gallon (227 L) aluminum fuel tank
- Ventilation to Coast Guard specifications
- Insulated engine box
- Instrument panel with hourmeter, tachometer, speedometer, voltmeter, temperature, fuel, oil pressure and trim indicator
- Panel light with dimmer switch
- Single lever control with stern drive trim switch

Designer: Mark Ellis Design Limited

MEDEIROS BOAT WORKS LIMITED

210 Burnhamthorpe Road East, Oakville, Ontario, Canada L6J 4Z2
Tel: (905) 257-0151 • Fax: (905) 257-0252
E-mail: limeston@interlog.com • Website: www.medeiros-boatworks.com

LIMESTONE[®]
by
Medeiros