

# LIMESTONE

by *Medeiros*



Photos may show available options

## 18' Runabout

Fast, fun and solid, the 18' *Runabout* offers boaters with high expectations exceptional seaworthiness and reliability. A baby-sister to the 20' *Runabout*, the 18' *Runabout* shares many of the features and benefits of the larger boat. Passengers and crew will enjoy the roomy cockpit and generously padded sleeper seats. The forward storage area keeps supplies organized and protected from sun and wind.

Whether taxiing or touring, the 18' *Runabout* comes to plane quickly and handles confidently. Handcrafted with time-tested tools and classic design, the *Limestone 18* will last a lifetime.



# LIMESTONE 18

## STANDARD SPECIFICATIONS - RUNABOUT

Standard specifications  
may change at any time  
without prior notice.

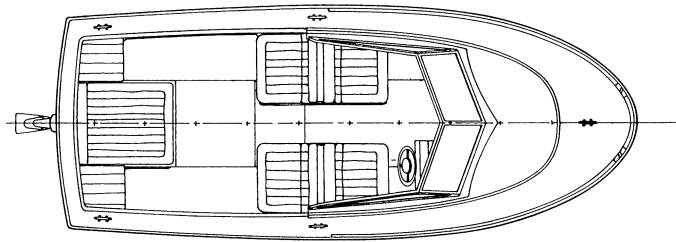
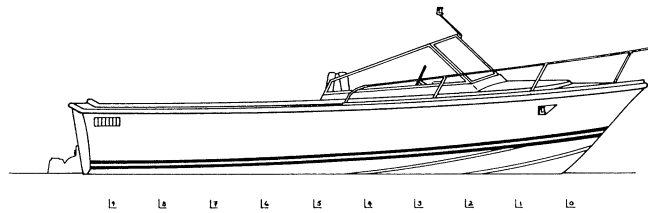
### Principal Dimensions

LOA 18'6" (5.64 m)

Maximum Beam 7'6" (2.29 m)

Draft 1'2" (0.36 m)

Displacement 2,600 lbs. (1.2 t)



### Hull Construction

- Single piece, balsa cored, hand laid-up FRP sandwich construction
- Smoke white hull
- Molded in dark blue chine stripes
- Heavy duty vinyl rub rail with rope inlay at hull-deck joint
- Anodized aluminum corner castings
- Bow and stern towing eyes
- Full length stringers overlaid to hull

### Deck and Interior

- Diamond non-skid pattern
- Stainless steel bow mooring cleat
- Two stainless steel bow mooring chocks
- Stainless steel midship mooring cleats
- All cleats through bolted through with backup plates
- Recessed stainless steel flag pole socket
- Aluminum framed windshield with tempered glass and two opening vents on side panels
- Recessed navigation lights
- Starboard windshield wiper
- Stainless steel steering wheel

- Seven gauge panel with tachometer, speedometer, voltmeter, temperature, fuel, oil pressure and trim indicator
- Six function breaker panel
- Single lever control with stern drive trim switch
- Upholstered motor box cushion and jump seats
- Upholstered seats with stowage beneath
- Open side storage bins with shelves
- Transom drain plugs with flappers to permit self-draining
- Lockable access door to forward storage compartment

### Electrical

- Automatic electric bilge pump
- Breaker panel
- Interior dome light
- Horn

### Engine

- Aft mounted MerCruiser stern drive
- 52 U.S. gallon (200 L) aluminum fuel tank
- Ventilation to Coast Guard specifications
- Insulated engine box
- Access hatches to fuel tank and stowage lockers

### MEDEIROS BOAT WORKS LIMITED

210 Burnhamthorpe Road East, Oakville, Ontario, Canada L6J 4Z2

Tel: (905) 257-0151 • Fax: (905) 257-0252

E-mail: [limeston@interlog.com](mailto:limeston@interlog.com) • Website: [www.medeiros-boatworks.com](http://www.medeiros-boatworks.com)

**LIMESTONE**<sup>®</sup>  
by  
*Medeiros*